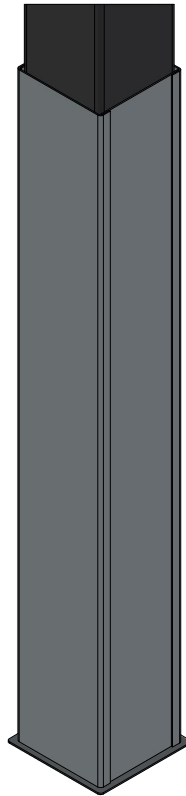


MPCTF-GS
MEGA OUTDOOR BATTING TUNNEL GROUND SLEEVE



Installation and Maintenance Manual

Call Jaypro Sports at 1-800-243-0533 during
regular business hours for technical support.
www.jayprosports.com

MEGA OUTDOOR BATTING TUNNEL GROUND SLEEVE

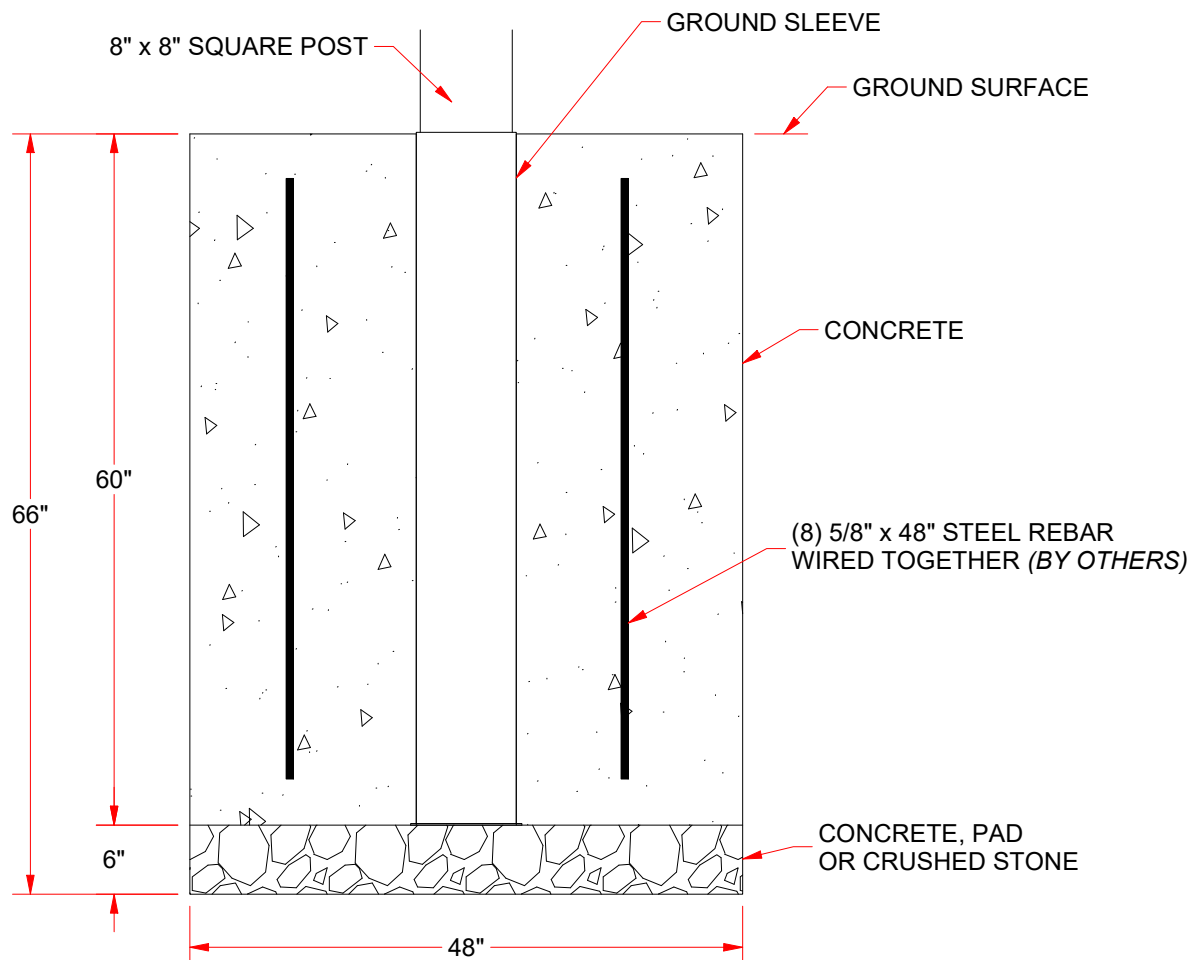


WARNING: Check Local Building Codes Before Installing Foundation

The dimensions provided are based on typical soil conditions and are for general guidance only. Before beginning any footing installation, consult your local building codes, as requirements may vary by location. If local codes specify stricter standards, those must be followed. Always ensure your installation is safe, legal, and fully code-compliant.

IMPORTANT NOTES:

- Ground sleeves are recommended to help facilitate.
- Excavate foundations in accordance with site specific foundation designs. Site specific engineered foundations are recommended.
- If installing ground sleeves make sure sleeves are plumb. The top of the sleeve should be approximately level finish the finished grade.
- If installing poles without sleeves, allow concrete to cure no less than 5 days before proceeding.



Ground Sleeve Installation:

1. Place the ground sleeve into the footing and fully support it so it's plumb in all directions.
2. Pour the foundations using 4,000 psi (min) concrete.
3. Slope the top of the footing away from the sleeve for proper drainage. Allow it to cure for no less than 5 days.
4. Install the pole into the sleeve. Pay close attention to its orientation with respect to the top brackets.



MPCTF-GS

www.jayprosports.com / (800) 243-0533 / 976 Hartford Tpke, Waterford, CT 06385 USA

SUBJECT TO CHANGES IN DESIGN AND MANUFACTURING
© COPYRIGHT 2025 JAYPRO SPORTS, LLC. ALL RIGHTS RESERVED

Sheet 2 of 2